

**sentta.**

A GLOBAL DESIGN CONCEPT



# sentta.

SENTTA is more than a furniture design brand. SENTTA is about legacy. With the savoir-faire from internationally renowned product designers, the boldness of emergent talents and the industry's knowledge acquired for more than 30 years, SENTTA creates sumptuous and distinctive pieces.

Contemporary, modern, minimalist or industrial design styles can be perceived in SENTTA's collection. It's a wide variety of pieces that can easily be adapted to the most unique and demanding ambiances and cultural patterns.

Portuguese by birth, SENTTA speaks many languages and travels the world getting inspiration from the most simple to complex details that can carry its identity. Diversity is the motto.

Traditional craftsmanship techniques and certified materials are combined with innovative finishes and fabrics to manufacture impeccable design pieces.

SENTTA's collection production line follows a zero waste policy and all the designs are registered next to the responsible entity.

---

*A SENTTA é mais do que uma marca de design de mobiliário. É sobre um legado.*

*Com o savoir-faire de designers de produto reconhecidos mundialmente, a irreverência de talentos emergentes e o conhecimento e experiência adquiridos ao longo de 30 anos, a SENTTA cria designs requintados e sumptuosos.*

*Contemporâneo, moderno, minimalista ou design industrial, são alguns dos estilos que podem ser reconhecidos na coleção SENTTA. A marca possui uma ampla variedade de peças que facilmente se adaptam aos mais distintos espaços e padrões culturais.*

*Portuguesa por nascimento, a SENTTA comunica em múltiplas línguas e viaja pelo mundo em busca de inspiração, desde o mais simples ao mais complexo detalhe, que possa refletir a sua identidade. Diversidade é o mote.*

*Técnicas artesanais tradicionais e materiais certificados são combinados com acabamentos e tecidos inovadores para fabricar peças de design irrepreensíveis. A linha de produção da coleção SENTTA segue uma política de desperdício zero e todos os designs são registados junto da entidade responsável.*



# contents

## COLLECTIONS

<b>ADA</b> COLLECTION BY MÓNICA BRAGA DOS SANTOS	8
<b>ALMA</b> COLLECTION BY ANA COELHO	12
<b>DAMA</b> COLLECTION BY ANDRÉ TEOMAN	14
<b>DUCHESS</b> COLLECTION BY ANDRÉ TEOMAN	18
<b>EDGE</b> COLLECTION BY MAURO LOURENÇO	20
<b>ESSEX</b> COLLECTION BY JAVIER GOMEZ	22
<b>GOA</b> COLLECTION BY FRANCESC RIFÉ	28
<b>HUGS</b> COLLECTION BY ANDRÉ TEOMAN	34
<b>JACKOB</b> COLLECTION BY PACO CAMUS	36
<b>LOU</b> COLLECTION BY ANA COELHO	38
<b>PIPO</b> COLLECTION BY ANDRÉ COSTA	40
<b>SCALA</b> COLLECTION BY SENTTA	42
<b>TRENÓ</b> COLLECTION BY ANA COEUR	46

## SWATCHES

FABRICS	51
WOOD	61
METAL	64
MARBLE	64

TECHNICAL DRAWINGS	65
--------------------	----



# New Collections



jackob lounge chair



alma coffee table



lou lounge chair

# Design Collaborations



**ana coelho**  
PORTUGAL



**ana coeur**  
USA



**andré costa**  
PORTUGAL



**andré teoman**  
PORTUGAL



**francesc rifé**  
SPAIN



**javier gomez**  
PANAMÁ



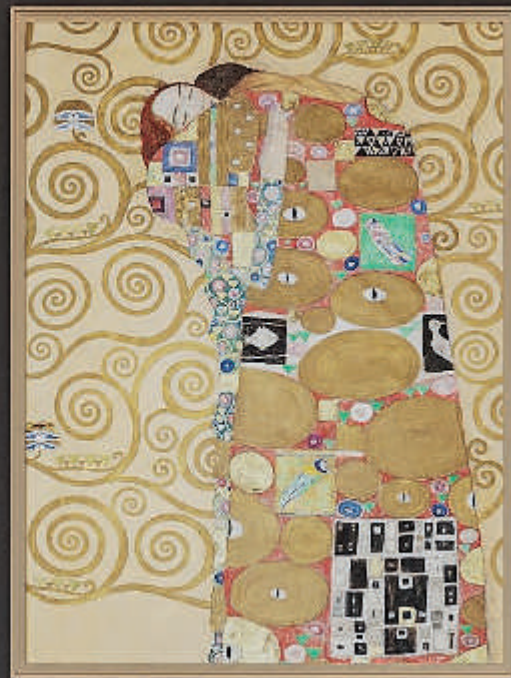
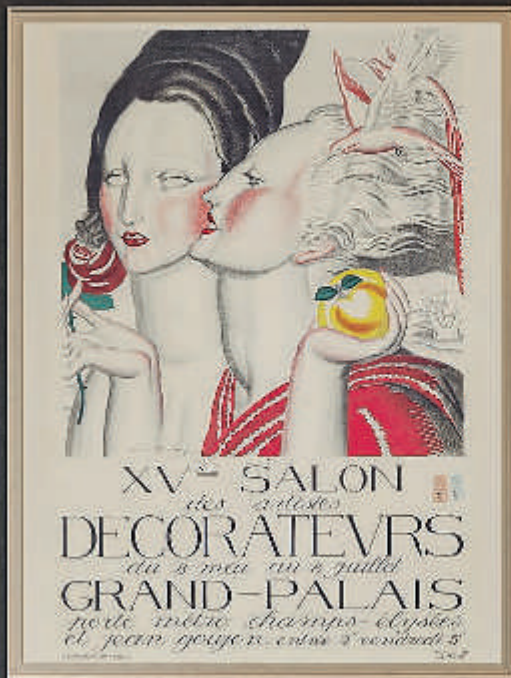
**mauro lourenço**  
PORTUGAL



**mónica braga  
dos santos**  
PORTUGAL



**paco camus**  
SPAIN



## ada collection

BY MÓNICA BRAGA DOS SANTOS





Designed by Mónica Braga dos Santos, this high end furniture collection is inspired by mid-century modern design, where functionality meets elegant curved lines. These smooth lines are enhanced with layers of volume that invite the touch and offer extra comfort.

ADA is a feminine given name that carries the connotations of “nobility” and “adornment”, a perfect fit for this luxurious collection.

The ADA collection is made in ash wood, upholstered in cotton velvet and finished in brown pewter. This harmony achieved with the materials’ choice makes it a must have armchair in any mid century modern ambiance.



ADA Armchair XC



ADA 2 Seat Sofa XC

## ada bar & daybed



ADA Bar XC



ADA Daybed

# alma collection

BY ANA COELHO



ALMA is a contemporary organic coffee table that embodies the journey that is the search for the soulmate. The design is composed by two pieces that formed a platonic relationship between them and can't live apart from each other.

The two pieces merged together harmoniously, creating a unique and enticing form.



ALMA Coffee Table

**dama collection**  
BY ANDRÉ TEOMAN



The DAMA collection is composed by geometric design pieces where angles and simple shapes are the main focus. It is a collection that combines the contemporary design style with the mid-century modern, making it adaptable to diverse decoration styles.

DAMA was designed by André Teoman and is inspired by the board game – checkers. The board and pieces' geometry were elegantly reflected in the furniture collection. The collection is made from ash wood finished in brown pewter and upholstered in velvet.



DAMA Rocking Chair



DAMA Armchair



DAMA Rocking Chair







**duchess collection**

BY ANDRÉ TEOMAN

Duchess Cage by André Teoman for SENTTA is a reinterpretation of the iconic midcentury modern cocoon chair. This new version has a detailed and complex wood work on its raw back that contrasts with a soft and comfortable seat. Geometry was the motto when conceiving Duchess lounge chair.



DUCHESS Cage

**edge collection**  
BY MAURO LOURENÇO



Inspired by the origami shapes, EDGE Lounge Chair is a geometric design piece with an imposing figure due to the strong use of wood, especially on the back. This aspect can be softened by the fabric chosen to upholster the piece.

EDGE was especially projected considering the minimalist and industrial home decoration styles though it can be easily adapted to other interior decorations.



EDGE Lounge Chair



**essex collection**  
BY JAVIER GOMEZ



“I wanted to create a sleek luxurious collection with an artistic appeal, inspired by the architecture of New York City’s buildings. A collection designed to fit in the most demanding ambiances, regardless of the focus being residential, hospitality, corporate...” Javier Gomez

The ESSEX collection has a cosmopolitan vibe inherited from the designer’s perspective about NYC that was translated through the materials choice. The entire collection is handcrafted in ash wood, finished in brown pewter and upholstered in cotton velvet.



ESSEX Armchair







ESSEX 2 Seat Sofa

## essex lounge chair bar stool and daybed



ESSEX Lounge Chair



ESSEX Bar Stool



ESSEX Daybed

# goa collection

BY FRANCESC RIFÉ STUDIO

Following the philosophy of the design studio, not only in industrial design but also in interior design, this collaboration is born with the intention of creating a timeless collection, warm in its composition and shape.

The GOA collection, designed by Francesc Rifé Studio, is inspired by the Goa sceneries and atmosphere, resulting in a clean yet enticing design. All the design pieces within the collection are made from ash wood, finished in brown pewter and upholstered in velvet.



GOA Dining Chair



GOA Armchair



GOA Bar Stool

## goa lounge and bar







GOA Lounge Chair



GOA Bar

**hugs collection**  
BY ANDRÉ TEOMAN



The need for touch, for a HUG, the feeling of protection and the calmness transmitted through this simple yet strong gesture was the inspiration that led to the development of this design collection. While embracing its user - HUGS Lounge chair, provides privacy and never loses its class and strong pose. This midcentury modern lounge chair is the ideal piece when it comes to welcoming ambiances (living rooms, hotel lounges or VIP areas).



HUGS Pouf

HUGS Lounge Chair

**jackob collection**  
BY PACO CAMUS



Jackob is a midcentury modern wingback lounge chair that seems to be levitating. The upholstery structure seems to have been just put over the wood base and there it stayed. The truth is another – the execution of such perfection demanded the work of the most skilled artisans.

Jackob is the accent piece any industrial design decoration needs.



JACKOB Lounge Chair

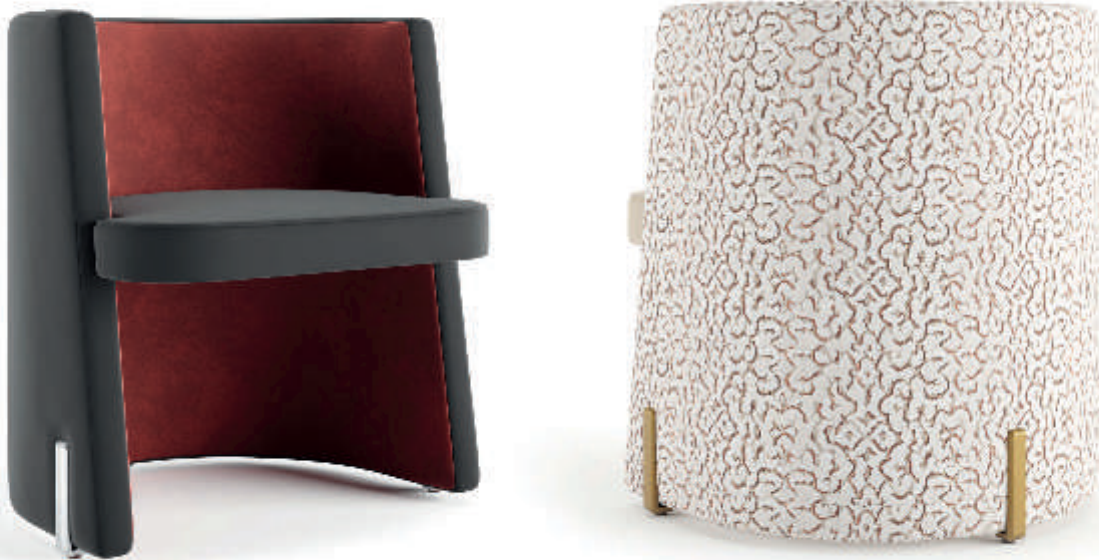
# lou collection

BY ANA COELHO



Walking down the runway is LOU, a mysterious and sumptuous lounge chair fully upholstered in velvet with metalled legs. LOU is a design piece filled with attitude and character, an attention catcher by nature that delights the paparazzi lenses.

LOU truly embodies the haute couture value SENTTA impregnates on its pieces.



LOU Lounge Chair

**pipo collection**  
BY ANDRÉ COSTA





PIPO is a modern design furniture collection inspired by Oporto's city internationally known Porto wine, particularly the vats where the wine develop its flavor and aroma. The result is a set of volumous pieces with a protective shape, elegantly designed.





**scala collection**  
BY SENTTA



Inspired by the different layers of the stepped landscapes that can be found in Italy and Greece borns the midcentury modern collection - SCALA. It is a velvet and tweed collection, handcrafted in steamed wood with a bold yet elegant shape. SCALA is a distinctive collection and versatile collection that seems to change everytime people look at it on a different perspective. That's due to its unique shape.



SCALA Armchair

# scala double sofa and armchair

BY SENTTA



SCALA Double Sofa



SCALA Armchair



**trenó collection**  
BY ANA COEUR



This sleigh design is inspired by the magic around the Christmas season. Straight from the story books, this art deco furniture collection brings to the ambiance a feeling of childlike wonder, nostalgia and winter adventure. Lavish and comfortable, Treno leads people through time, bringing back memories from cherished moments.



TRENÓ Armchair



TRENÓ Lounge Chair





TRENÓ Wicker





FABRICS

# ALDECO – BETREND · Standard



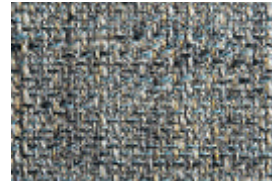
betrend 1



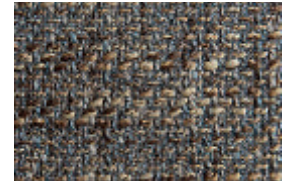
betrend 3



betrend 4



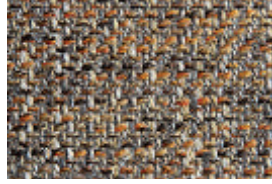
betrend 6



betrend 8



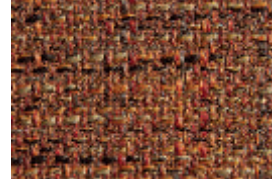
betrend 9



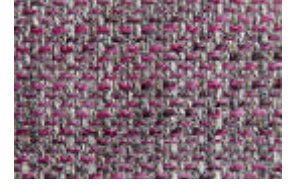
betrend 10



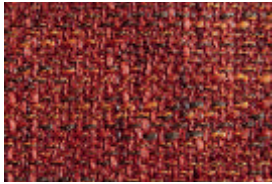
betrend 11



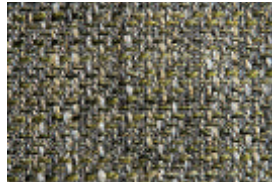
betrend 12



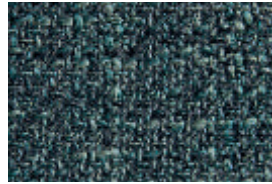
betrend 13



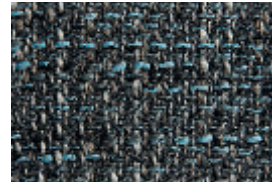
betrend 15



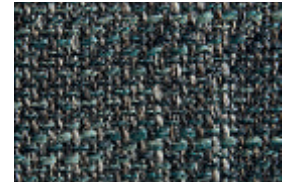
betrend 17



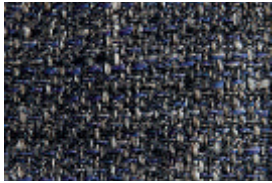
betrend 18



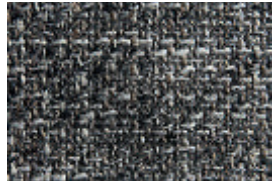
betrend 19



betrend 22



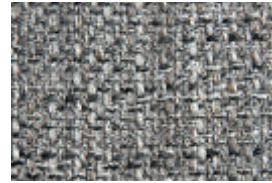
betrend 23



betrend 24



betrend 25



betrend 26

# EVO – SOFY · Standard



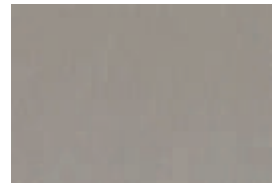
sofy 01



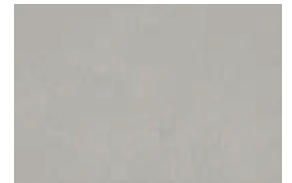
sofy 03



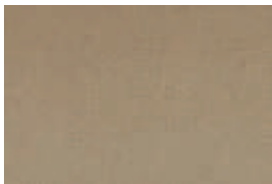
sofy 10



sofy 13



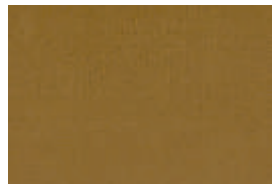
sofy 14



sofy 18



sofy 27



sofy 28



sofy 29



sofy 30



sofy 33



sofy 37



sofy 38



sofy 39



sofy 41



sofy 46



sofy 47



sofy 48



sofy 50

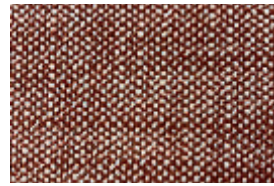
## PEDROSO E OSÓRIO - Loom · Standard



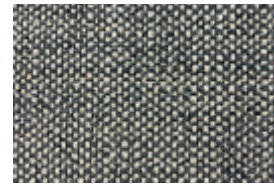
01



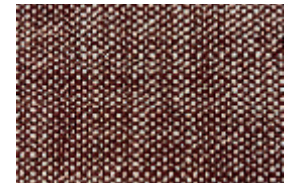
02



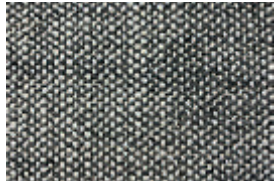
03



04



05



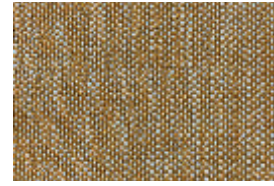
06



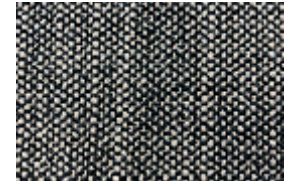
07



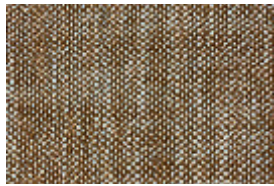
08



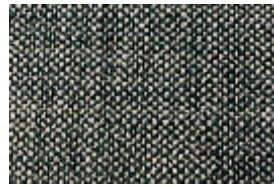
09



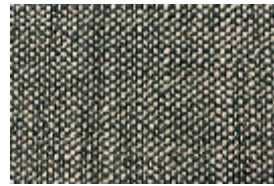
10



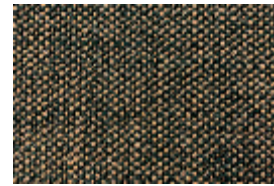
11



12



13



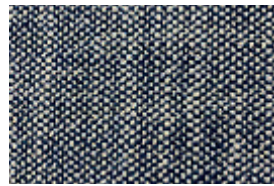
14



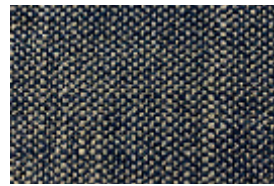
15



16



17



18

## PANAZ - LUXE PERFORMANCE VELVET · Standard



108 Delph



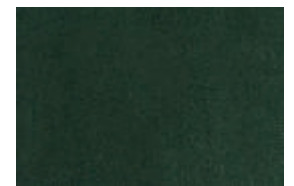
111 Peacock



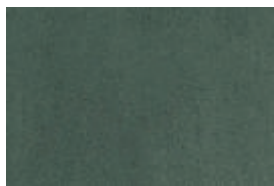
151 Teal



192 Ink



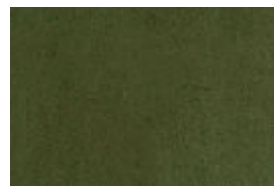
211 Spruce



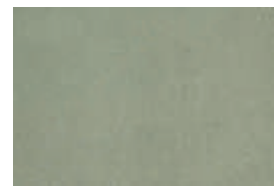
215 Elm



238 Citrus



252 Willow



271 Celadon



408 Terracotta



447 Cinnamon



467 Bordeaux



618 Blush



642 Thistle



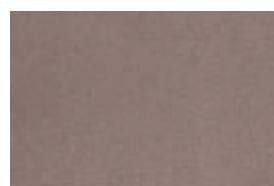
648 Fig



837 Stone



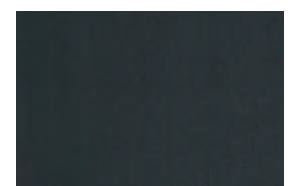
900 Black



905 Dove



919 Zinc



954 Graphite

PANAZ - INDULGENCE · Cat. F06



105 Indigo



128 Violet



129 Ocean



155 Duck Egg Blue



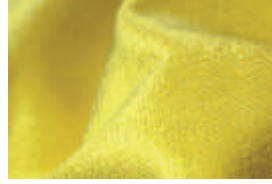
196 Heritage Blue



226 Lime



233 Pistachio



238 Citrus



300 Gold



400 Red



414 Wine



442 Burnt Orange



505 Pearl



624 Mulberry



646 Peony



702 Chocolate



703 Mink



837 Stone



904 Pewter

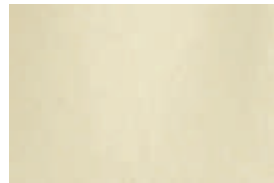


952 Platinum

ALDECO – SIÉGE · Cat. F07



0001 bright white



0099 ivory



0157 bronze mist green



6030 cloudy blue



0166 curry



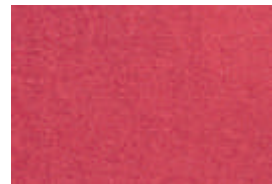
0176 pure yellow



0262 deep ochre



0278 flamingo



0328 bubble gum



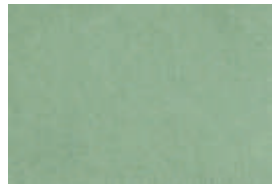
0374 royal purple



0547 lavender



0637 baltic blue



7046 aqua marine



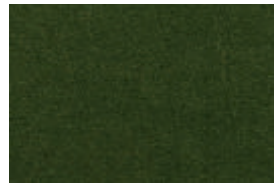
7072 capri blue



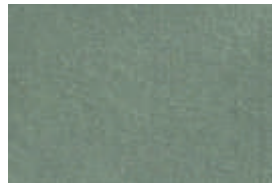
0775 bright green



7076 tropical green



0790 eden green



0865 aquarelle



0886 steal



0968 deep black

## PANAZ – SHAPES · Cat. F07



maze 151 teal



maze 233 pistachio



maze 314 mustard



maze 437 tuscan red



maze 791 mocha



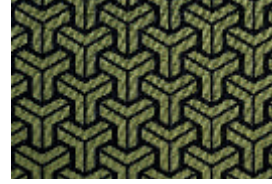
maze 911 steel



maze 952 platinum



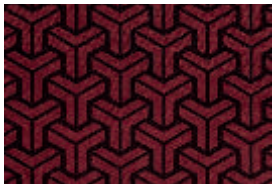
tessellate 151 teal



tessellate 233 pistachio



tessellate 314 mustard



tessellate 437 tuscan red



tessellate 791 mocha

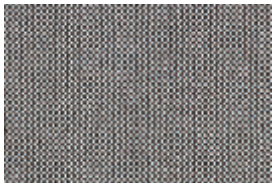


tessellate 911 steel

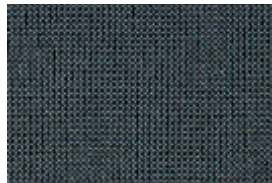


tessellate 952 platinum

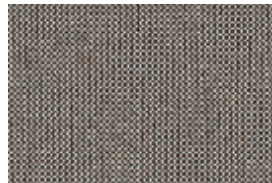
## GABRIEL – GO CHECK · Cat. F08



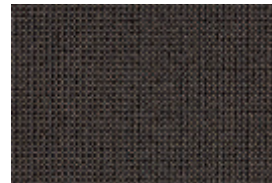
go check 60079



go check 60081



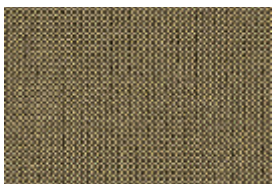
go check 61138



go check 61140



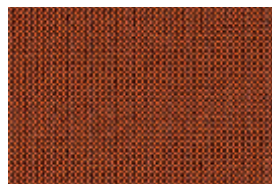
go check 61141



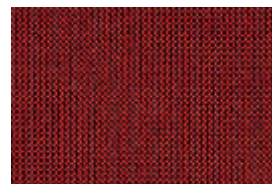
go check\_61142



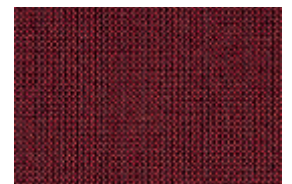
go check 61143



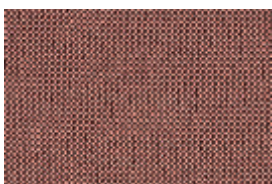
go check 63080



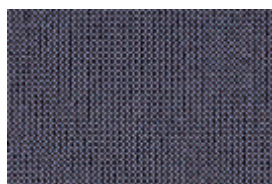
go check 64171



go check 64172



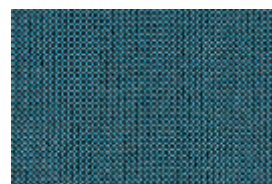
go check 64183



go check 65085



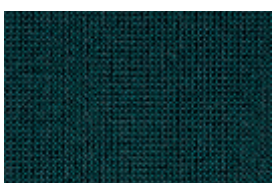
go check 66136



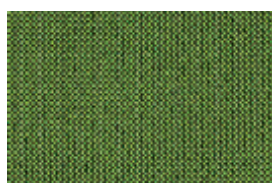
go check 67070



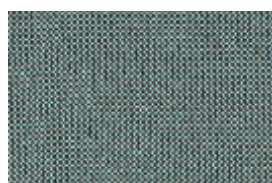
go check 68149



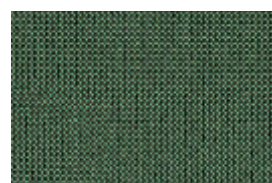
go check 68152



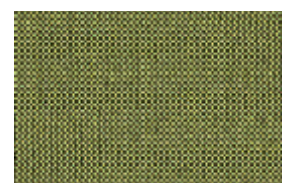
go check 68154



go check 68168



go check 68169



go check 68170

# KVADRAT - DANILO BY SAHCO · Cat. F09



0001



0002



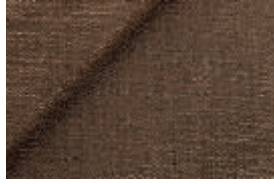
0003



0004



0005



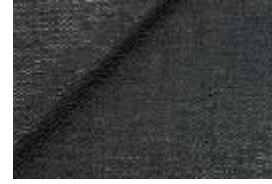
0006



0007



0008



0010



0011



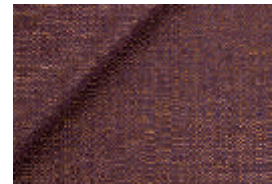
0012



0013



0014



0015



0016

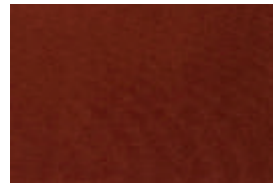
# PINTAIL - ROYAL VELVET · Cat. F09



2854 ocre



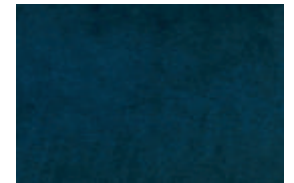
3001 red



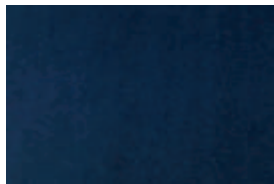
3575 brique



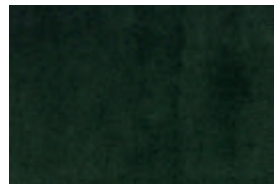
3951 bordeaux



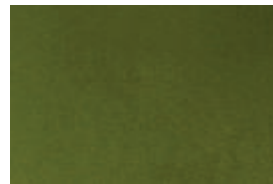
5483 petrol



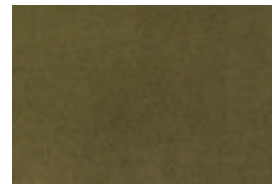
5993 deep navy



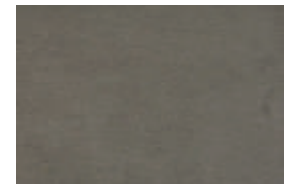
6007 bottle



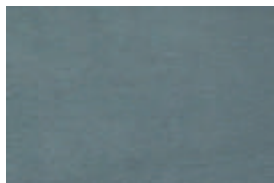
6360 grass



6422 olive



7352 taupe



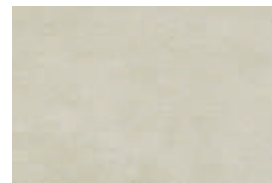
7455 steel blue



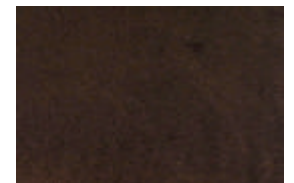
7851 grey



7981 antracite



8315 sand



8925 chocolat



9999 black



## RUBELLI - FABTHIRTY · Cat. F10



alga



antracite



arancio



argento



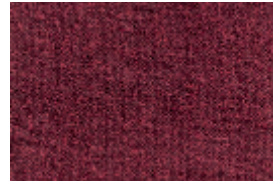
argilla



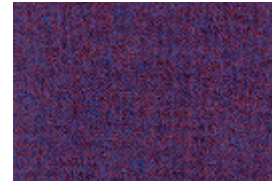
bianco



blu



bordeaux



genoa



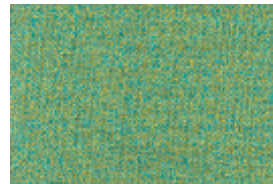
giallo



notte



pesco



prato



rosa



rosso



ruggine



sabbia



teal blu



tiffany



verde

## RUBELLI - ELLIODORO · Specials



acqua



avorio



dorata



giada



madreperla



rosa

# DESIGNERS GUILD – BRECON · Specials



brecon - absinthe



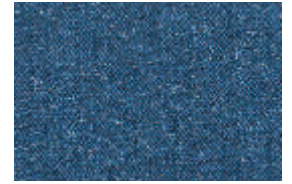
brecon - cassis



brecon - celadon



brecon - charcoal



brecon - cobalt



brecon - coconut



brecon - crocus



brecon - delft



brecon - dune



brecon - ebony



brecon - emerald



brecon - fuchsia



brecon - ink



brecon - natural



brecon - pebble



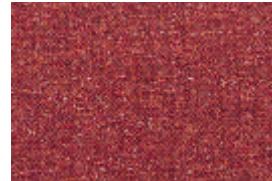
brecon - peony



brecon - pimento



brecon - sapphire



brecon - scarlet



brecon - silver



brecon - turquoise



brecon - violet



brecon - waterfall

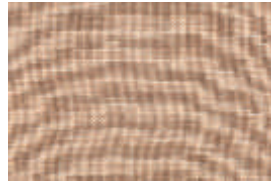
## KRAVET - PAOLO MOSCHINO · Specials



ava nivelles oyster - taupe



chocolate glazed linen-ch



leuven - antique pink



leuven - cielo



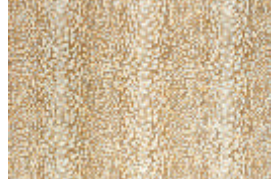
leuven - taupe



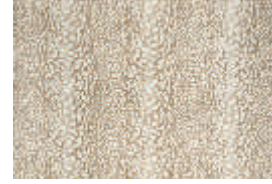
ocelot - antique pink



ocelot - cielo



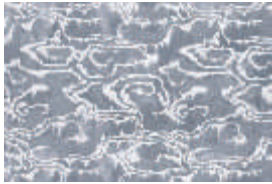
ocelot - ochre



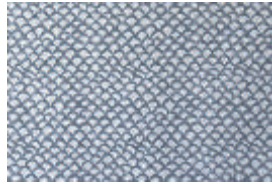
ocelot - taupe



palmyra - blue

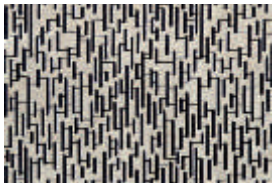


riviere - blue

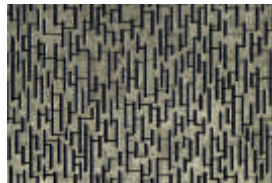


roche - blue

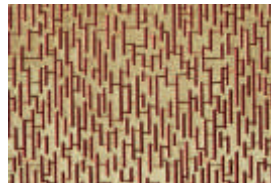
## NOBILIS - VELOURS · Specials



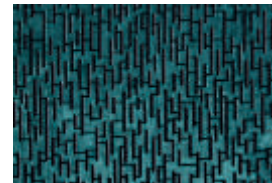
medley 10678\_03



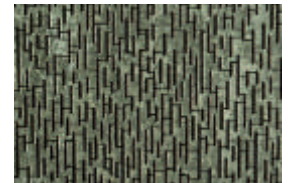
medley 10678\_10



medley 10678\_31



medley 10678\_67



medley 10678\_71



monte-cristo 10571\_03



monte-cristo 10571\_23

# AMS - PACIFIC · Leather



577



579



601



604



609



629



641



647



648



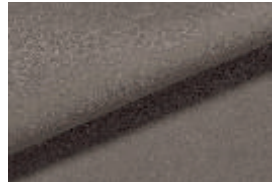
649



655



659



660



663



670



677



679



711



751



770

# AMS - VOGUE · Leather



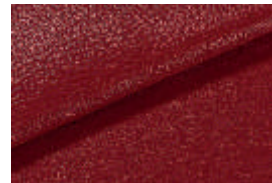
6007



6011



6012



6013



6017



6018



6019



6020



6022



6023



6029



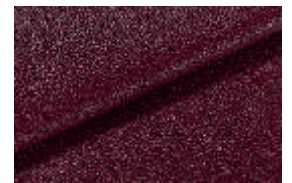
6030



6034



6041



6042



6043



6046



6047



6048



6049

A close-up photograph of dark-stained wood planks with a prominent vertical grain and several knots. The lighting is dramatic, highlighting the texture and natural imperfections of the wood.

# SWATCHES

## STANDARD WOOD COLORS



**C17**  
PARIS GRAY BRUSHED/ CINZA PARIS  
ESCOVADO/ GRIS PARIS BROSSÉ/  
GRAU PARIS GERÜSTET/ GRIS PARIS  
CEPILLADO



**C27**  
NATURAL/ NATURAL/ NATUREL/  
NATUR/ NATURAL



**C31**  
BROWN WENGUÉ/ WENGUE  
CASTANHO/ WENGUÉ MARRÓN/  
WENGÉ BRAUN/ WENGUE CASTAÑO



**C44**  
OAK COLOR / COR CARVALHO/  
COULEUR CHÊNE/ EICHE FARBE/  
COLOR DE ROBLE



**C46**  
BLACK WENGUÉ/ WENGUE NEGRO/  
WENGUÉ NOIR/ SCHWARZ WENGÉ /  
WENGUE NEGRO



**C112**  
WALNUT COLOR/ COR NOGUEIRA/  
NOYER COULEUR/ FARBE WALNUSSE/  
COLOR NOGAL



**C113**  
HONEY STAIN/ PINHO MEL/ PINE  
MIEL/ KIEFER HONIG/ PINO MIEL



**C544**  
SUPER MATT OAK COLOR / COR  
CARVALHO SUPER MATE / COULEUR  
CHÊNE SUPER MATE / EICHFARBE  
SUPER MATT / COLOR DE ROBLE  
SUPER MATE



**C457**  
BROWN PEWTER / CASTANHO  
ACINZENTADO / MARRÓN  
GRISÉ / GRAU BRAUN  
MARRÓN GRISACEO



**C458**  
SHADED GREY / CINZA  
MATIZADO / GRIS NOIRCI  
GRAU EINGEFÜRT  
GRIS MATIZADO

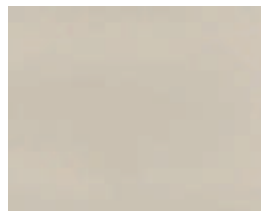


**C704**  
DARK GREY/ CINZA ESCURO/ GRIS  
FONCÉ/ DUNKEL GRAU/ GRIS  
OSCURO

## SPECIAL WOOD COLORS



**C832**  
WHITE BRUSHED/BRANCO  
ESCOVADO/BLANC BROSSÉ/WEISS  
GEB-ÜRSTET / BLANCO CEPILLADO



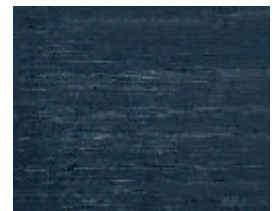
**C18**  
BEIGE / BEGE



**C16**  
LUANDA BEIGE / BEGE LUANDA

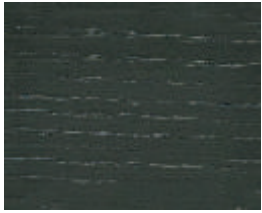


**C929**  
CHARCOAL GREY / CINZA  
CHARCOAL / GRIS CHARCOAL /  
CHARCOAL GRAU / CHARCOAL GRIS

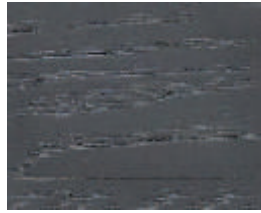


**C924**  
BLUE ANILINE / ANILINE AZUL /  
BLEU ANILINE/ BLAU ANILINE / AZUL  
ANILINE

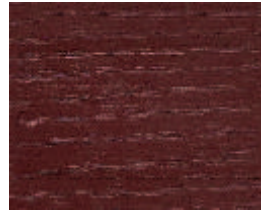
## SPECIAL WOOD COLORS



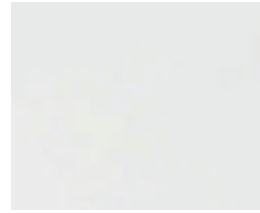
**C925**  
GREEN ANILINE / ANILINE VERDE  
/ VERT ANILINE / GRÜN ANILINE /  
VERDE ANILINE



**C922**  
GREY ANILINE/ ANILINE CINZA /  
GRIS ANILINE / GRAU ANILINE / GRIS  
ANILINE



**C923**  
RED ANILINE / ANILINE VERMELHO  
/ ROUGE ANILINE / ROT ANILINE /  
ROJO ANILINE



**C48**  
WHITE HIGH GLOSS LACQUERED  
LACADO BRANCO ALTO BRILHO  
LAQUÉ BLANC BRILLANT /  
HOCHGLANZ WEISSLACK / LACADO  
ALTO BRILLO



**C593**  
BURNISHED GOLD/ DOURADO  
TEXTURADO/ DORÉ TEXTURÉ/ GOLD  
TEXTUR/ ORO BRUNIDO



**C60**  
BURNISHED SILVER / PRATA  
TEXTURADA / ARGENTÉ TEXTURE  
SILBER TEXTUR / PLATEADO CON  
TEXTURA



**C61**  
ANTIQUÉ GOLD / OURO VELHO  
VIEUX OR ANTIK GOLD / ORO VIEJO



**C68**  
ANTIQUÉ SILVER / PRATA VELHO  
VIEUX ARGENTÉ / ANTIK SILBER  
PLATEADO VIEJO

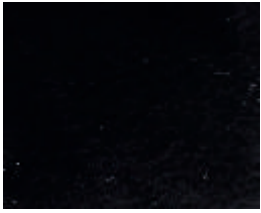


**C69**  
ANTIQUÉ BURNISHED GOLD  
DOURADO VELHO TEXTURADO  
VIEUX DORÉ TEXTURÉ / ANTIK TEXTUR  
GOLD / DORADO VIEJO



**C73**  
LIGHT BEIGE PATINE / PATINE BEGE  
CLARO / BEIGE CLAIR PATINE  
HELLBEIGE PATINE / BEIGE CLARO  
PATINE

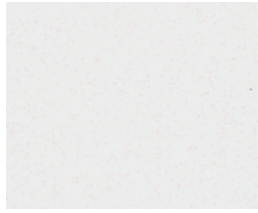
## METAL COLORS



**T0195**  
BLACK SMOOTH



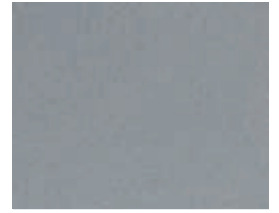
**T0196**  
TEXTURED BLACK



**T0351**  
WHITE SMOOTH



**T0353**  
GOLDEN SMOOTH



**T0355**  
SILVER SMOOTH



**T0455**  
POLISHED STAINLESS STEEL WITH  
GOLD GLOSS VARNISH



**T0456**  
BRUSHED STAINLESS STEEL WITH  
ROSE GOLD VARNISH



**T0457**  
BRUSHED STAINLESS STEEL WITH  
BRASS GLOSS VARNISH

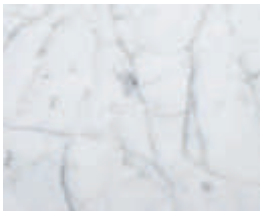


**T0458**  
MATTE COPPER EPOXY



**T0459**  
RUST EPOXY

## MARBLE



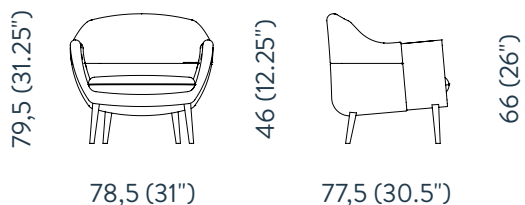
**T0004**  
CARRARA MARBLE



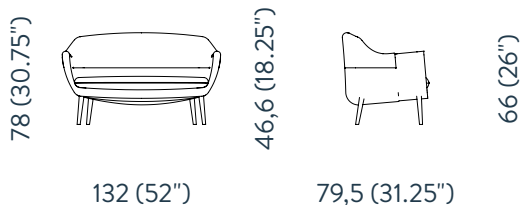
S E N T T A .

# TECHNICAL DRAWINGS

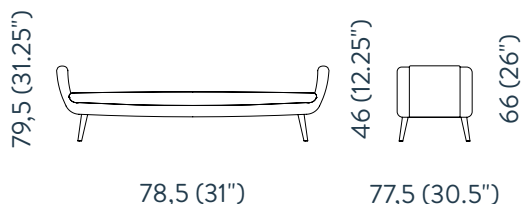
C O L L E C T I O N 2 0 2 2



**ADA Lounge Chair / XC**  
by mónica braga dos santos | 1 x box 0,46 m<sup>3</sup>  
8,5 kg - 18.7 lb



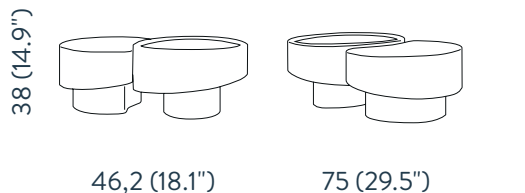
**ADA Lounge Double / XC**  
by mónica braga dos santos | 1 x box 0,52 m<sup>3</sup>  
14,5 kg - 32 lb



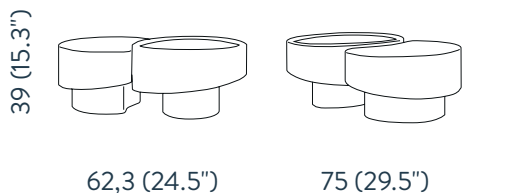
**ADA Daybed**  
by mónica braga dos santos | 1 x box 0,46 m<sup>3</sup>  
8,5 kg - 18.7 lb



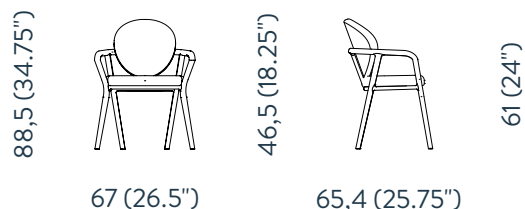
**ADA Bar XC**  
by mónica braga dos santos | 1 x box 0,44 m<sup>3</sup>  
10 kg - 22 lb



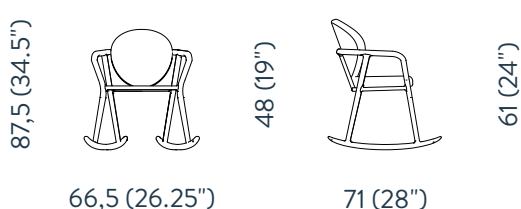
**ALMA Coffee Table**  
by ana coelho



**ALMA STONE Coffee Table**  
by ana coelho

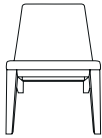


**DAMA Armchair**  
by andré teoman | 1 x box 0,37 m<sup>3</sup>  
8 kg - 17.6 lb

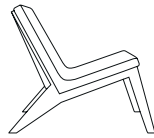


**DAMA Rocking Chair**  
by andré teoman | 1 x box 0,37 m<sup>3</sup>  
8 kg - 17.6 lb

76,3 (30")



61 (24")



86,4 (34")

45,4 (17.8")

**EDGE Lounge Chair**  
by mauro lourenço

78,2 (30.75")



61 (24")



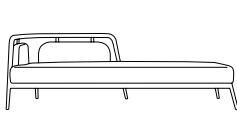
61,5 (24.25")

49 (19.25")

**ESSEX Chair**  
by javier gomez

1 x box 0,37 m<sup>3</sup>  
10 kg - 22.1 lb

65 (25.5")



200 (78.5")

40 (15.7")



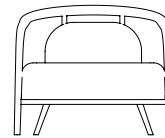
82 (32.2")

61 (24")

**ESSEX Daybed**  
by javier gomez

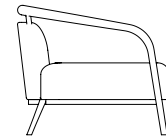
1 x box 0,72 m<sup>3</sup>  
43 kg - 94.8 lb

66 (26")



66 (26")

41,5 (16.25")



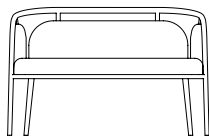
76,5 (30")

61 (24")

**ESSEX Lounge Chair**  
by javier gomez

1 x box 0,37 m<sup>3</sup>  
14 kg - 30.9 lb

68 (26.75")



151 (59.50")

41,5 (16.25")



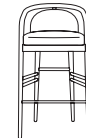
67 (26.5")

61 (24")

**ESSEX Double**  
by javier gomez

1 x box 0,72 m<sup>3</sup>  
33 kg - 72.8 lb

100(39.25")



51 (20")

78 (30.75")



56 (22")

90 (35.50")

**ESSEX Bar**  
by javier gomez

1 x box 0,38 m<sup>3</sup>  
10,2 kg - 22.5 lb

78 (30.75")



49 (19.25")



50 (19.75")

48 (19")

**GOA Dining Chair**  
by francisc rifé studio

2 x box 0,35 m<sup>3</sup>  
6 kg - 13.2 lb

78,5 (31")



56 (22")

48 (19")

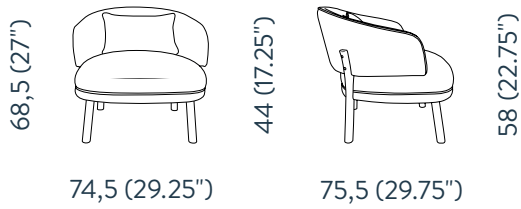


57,5 (22.75")

70 (27.50")

**GOA Armchair**  
by francisc rifé studio

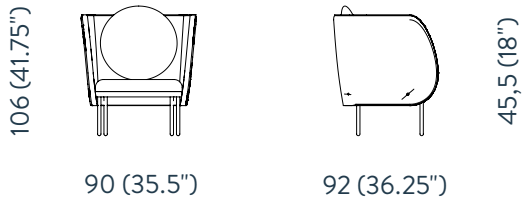
1 x box 0,35 m<sup>3</sup>  
7 kg - 15.4 lb



**GOA Lounge Chair**  
by francesc rifé studio | 1 x box 0,34 m<sup>3</sup>  
16 kg - 35.3 lb



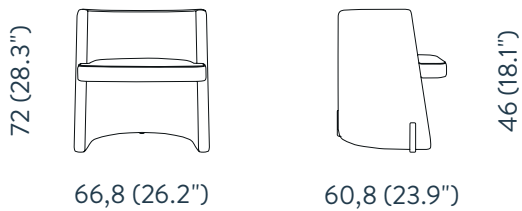
**GOA Bar**  
by francesc rifé studio | 1 x box 0,47 m<sup>3</sup>  
7 kg - 15.4 lb



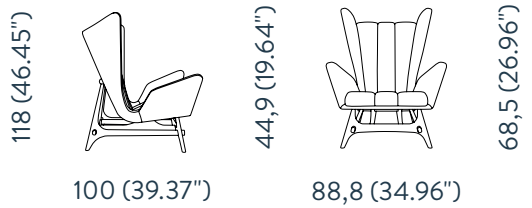
**HUGS Lounge Chair**  
by andré teoman | 1 x box 0,34 m<sup>3</sup>  
11,5 kg - 25.4 lb



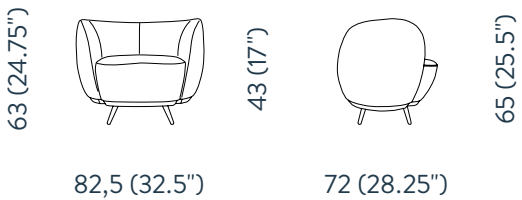
**HUGS Puff**  
by andré teoman | 1 x box 0,18 m<sup>3</sup>  
8 kg - 17.6 lb



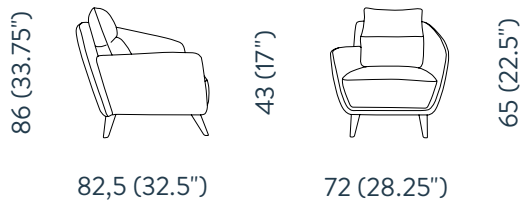
**LOU Lounge Chair**  
by ana coelho



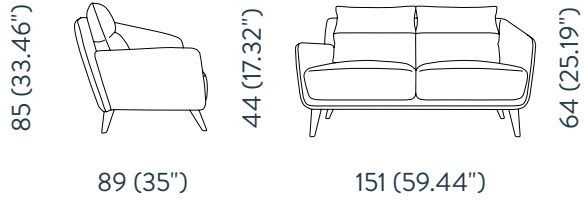
**JACKOB Lounge Chair**  
by paco camus



**PIPO Lounge Chair**  
by andré costa | 1 x box 0,37 m<sup>3</sup>  
17,5 kg - 38.6 lb

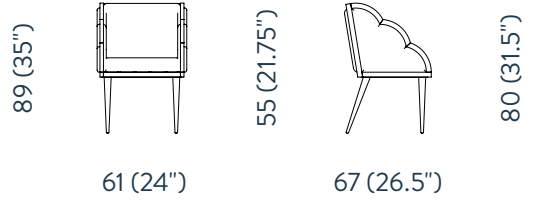


**SCALA Lounge Chair**  
by sentta | 1 x box 0,56 m<sup>3</sup>  
21,5 kg - 47.4 lb



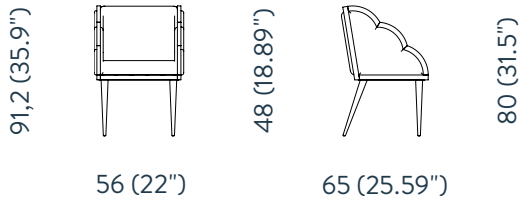
**SCALA Double**  
by sentta

39 kg - 85.9 lb

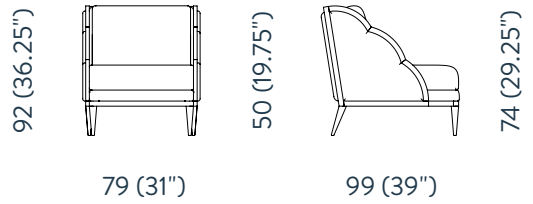


**TRENÓ Armchair**  
by ana coeur

1 x box 0,34 m<sup>3</sup>  
8 kg - 17.6 lb



**TRENÓ Wicker**  
by ana coeur



**TRENÓ Lounge Chair**  
by ana coeur

1 x box 0,37 m<sup>3</sup>  
8 kg - 17.6 lb



Download  
catalogue

VIA ROTA DOS MÓVEIS I, 624  
4585-850 REBORDOSA  
PORTUGAL

T +351 224 119 120  
M +351 913 598 968  
E SALES@SENTTA.PT  
WWW.SENTTA.PT  
FOLLOW US ON @SENTTADESIGN

APOIOS







[www.sentta.pt](http://www.sentta.pt)